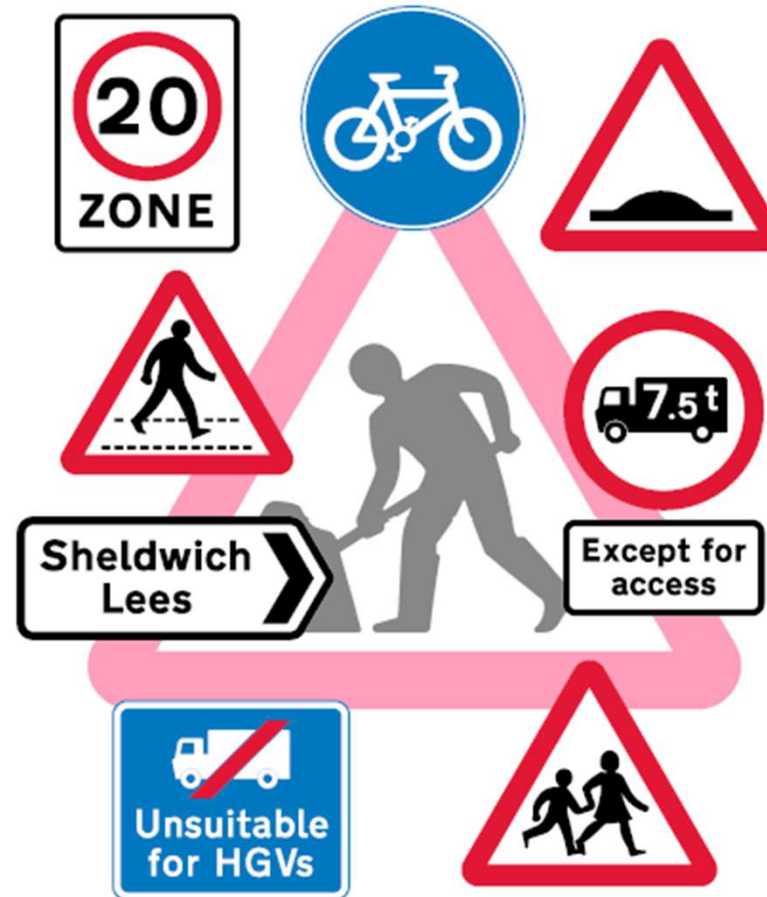
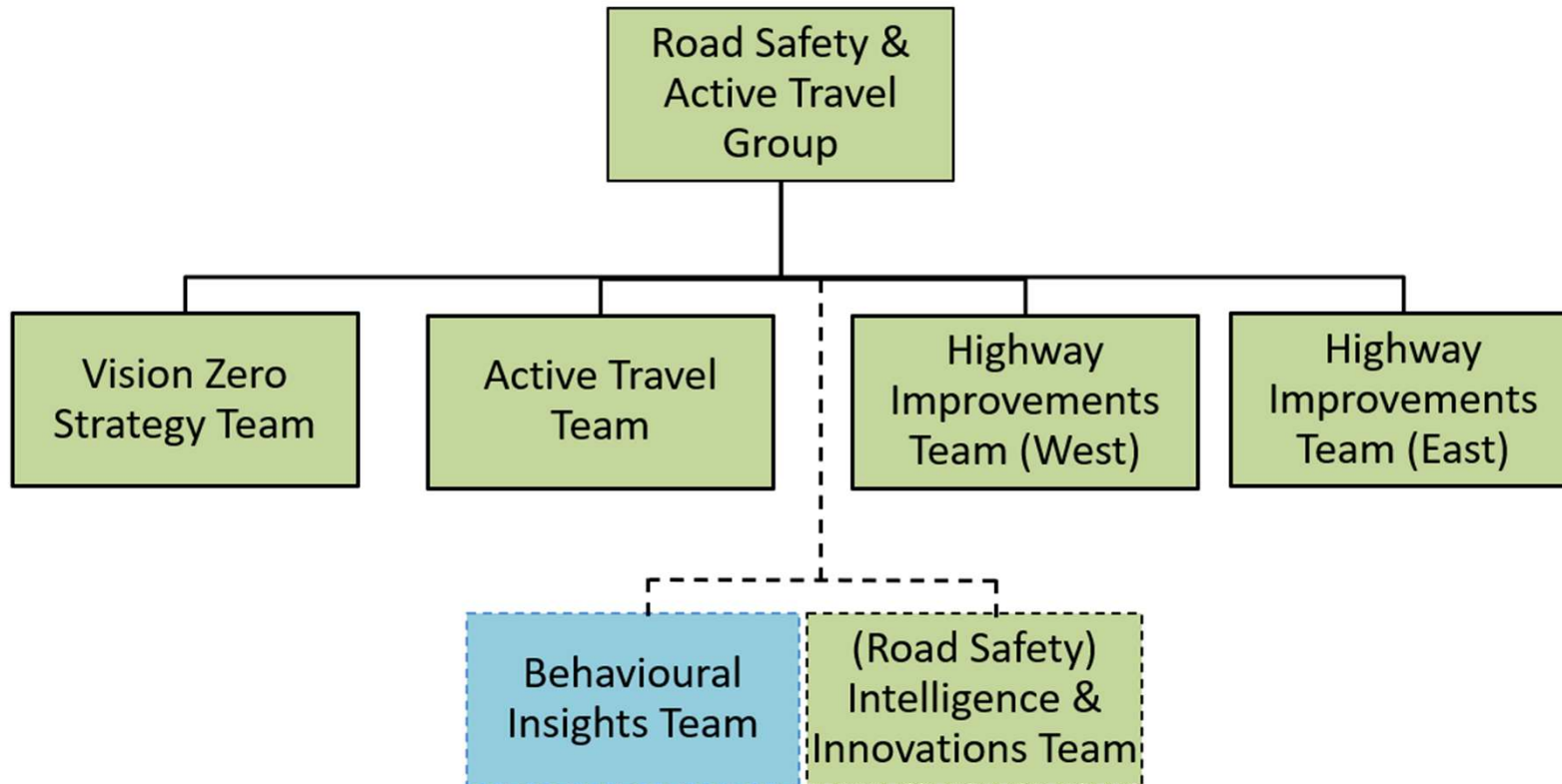


Highway Improvement Plans



Sebastian Bures
Schemes Project Manager
June 2022

Road Safety & Active Travel Group



Road Safety & Active Travel Group


- Crash Remedial Sites – Priority schemes where there have been a series of injury related incidents over the last 3 years.
- Local Transport Plan – Schemes which have been identified and prioritised by the Road Safety group as a suitable highway scheme where funding is to be bid for.
- Active Travel Fund – Schemes which are funded by Department for Transport to promote Active Travel
- S106 Schemes – The delivery of specific highway improvements which have been requested as part of development and planning consent.

Highway Improvement Plans (HIP)

- The HIP document has been developed to support parish / town councils and elected bodies in working with their communities, to enable them to record and prioritise potential highway improvements.
- It is written and owned by those groups, but we can assist with the detail where required.
- Our Community and Engagement Team will aim to meet parishes virtually or face to face at least once throughout the year and discuss potential schemes to take forward for further investigation.
- It may not always be achievable or practical to implement a desired request

Highway Improvement Plans (HIP)

Name of Parish Council -- Highway Improvement Plan/Action Plan

HIGHWAY IMPROVEMENT PLAN -- Stage 1 -- (Parish Council to list with as much information as possible and in priority order their issues and then send to KCC contact)			ACTION PLAN -- Stage 2 -- (to be completed by KCC contact and regular updates provided to the Parish Council)			
Priority	Location	Problem & Potential solution (if known)	Action/Programme (Who/When)	Cost Estimate	Funding Source	KCC Comments
1.	High Street between Post office and last property to the west of the garage 	Problem: Speeding off peak. There are parked vehicles however only in the evenings and weekends. There is a school nearby. Solution: Reduce speed limit to 30mph. Residents have been canvassed and support. Local KCC member is supportive.	1. Traffic survey required to establish existing speeds by end of June 18. KCC to arrange. 2. Review report and agree whether the site is suitable without further traffic calming measures. KCC by mid July. 3. If suitable then discuss with PC and give early advice on potential costs. Mid July. 4. Agree the way forward -- outline design/estimate including staff fees. Mid July. 5. Detailed design. Traffic Order and cost estimate. August/September. 6. Implementation of scheme -- November.	1. → £500 2. → £0 3. → £0 4. → £0 5. → £4,000 6. → £5,000	1. KCC? 5. Parish Council? 6. Parish Council- 50%/KCC- 50%?	Plan received by KCC on 10.10.10. KCC review of plan 20.10.19. KCC made contact with Parish Council clerk on 21.10.19 and agreed the action/programme. Priority list for the year with Nos 1 and 2 to be taken forward.
2.	High Street between Post office and last property to the west of the garage	Problem: HGV's using road which is unsuitable. Solution: Unsuitable for HGV signs to be placed at both ends of High Street.	1. Site visit by KCC. 2. If Site suitable then KCC to raise works order.	£300	KCC	
3.						

Note: All Parish Council requests for Highway Improvement Plans to be submitted once a year and an action/programme for the year agreed. Any additional requests may not be investigated/actioned until the following year.

Types of Highway Improvements



Funding

- The HIP team have limited financial contributions for HIP requests, but we will however, support locally elected groups should they wish to fund investigations and schemes themselves. Funding for most HIPs come from:
 - Parish Precept
 - Combined Member Funding
 - KCC Small Works Budget
- There may be opportunities to seek additional funding from other sources if your HIP priorities are endorsed by evidence and have both community and Member support.
 - Crash Remedial Measures
 - Local Transport Plan bids
 - Section 106 or S278 funding

Communication

- The Road Safety and Active Travel Group (reformed in June 22) will look after the Highway Improvement Plans, and our new dedicated Community and Engagement Team will be in touch at some point to look at your top priorities.
- The new team is split to East Kent and West Kent where we have a total of 229 active HIPs at present.
- HIPs should be submitted through the following email addresses:

east.highwayimprovements@kent.gov.uk

west.highwayimprovements@kent.gov.uk

Other Enquiries

- The Road Safety and Active Travel Group deals with new highway projects only.
- Pot Holes, resurfacing, drainage, street lighting, vegetation clearance and structures are all dealt with by other teams.

Report a fault tool

- <https://www.kent.gov.uk/roads-and-travel/report-a-problem>
- Response times:
 - Dangerous Faults 2hrs
 - Safety Hazards 7 days
 - Routine faults 28 days

Any questions?